

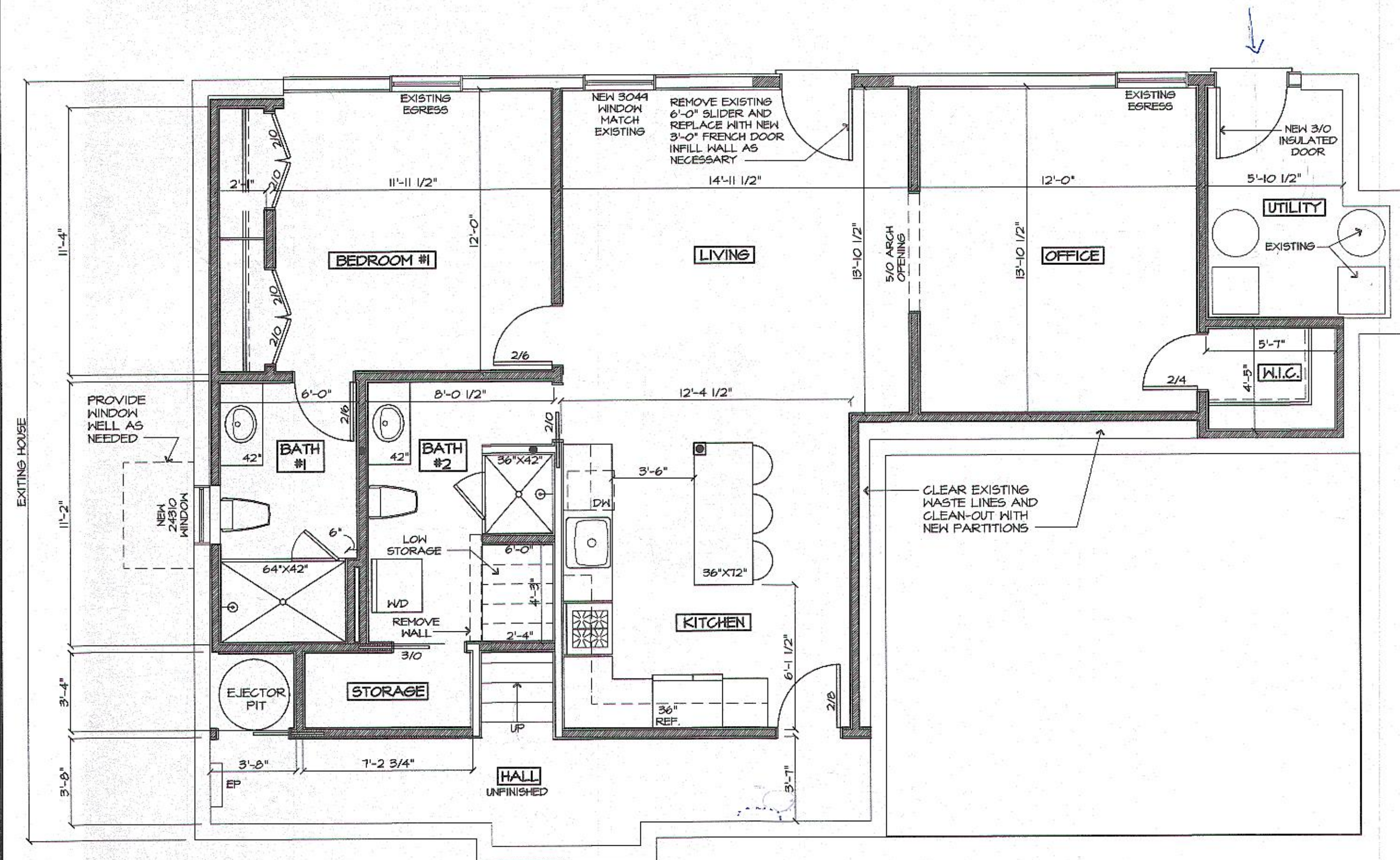


PROPOSED BASEMENT LAYOUT FOR:
NATASHA KAZIM
30 SALK DRIVE
HIGHLAND, NEW YORK
TOWN OF LLOYD ULSTER COUNTY

FRAMING NOTES:
REFER TO COLUMN AND HEADERS SIZES ON SHT. A-2
TYPICAL EXTERIOR & INTERIOR BEARING HEADER TO BE 3 1/2" X 9 1/2" M.L.
ALL HEADERS 5'-0" LONG -OR- LESS TO BE (2) 2x10'S U.O.N.
ALL HEADERS 5'-1" - 7'-0" LONG TO BE 3 1/2" X 1 1/4" MICROLAM U.O.N.
TYPICAL POST SUPPORTING HOOD BEAMS TO BE (3) 2x4 & (3) 2x6, U.O.N.
SECURE ALL FLOOR JOISTS/CEILING JOISTS TO FLOOR BEAM W/ JOIST HANGERS

EXISTING FOUNDATION TO REMAIN
EXISTING PARTITION/WALL TO REMAIN
EXISTING PARTITION/WALL TO REMOVED
NEW PARTITION
EXISTING COLUMN TO REMAIN

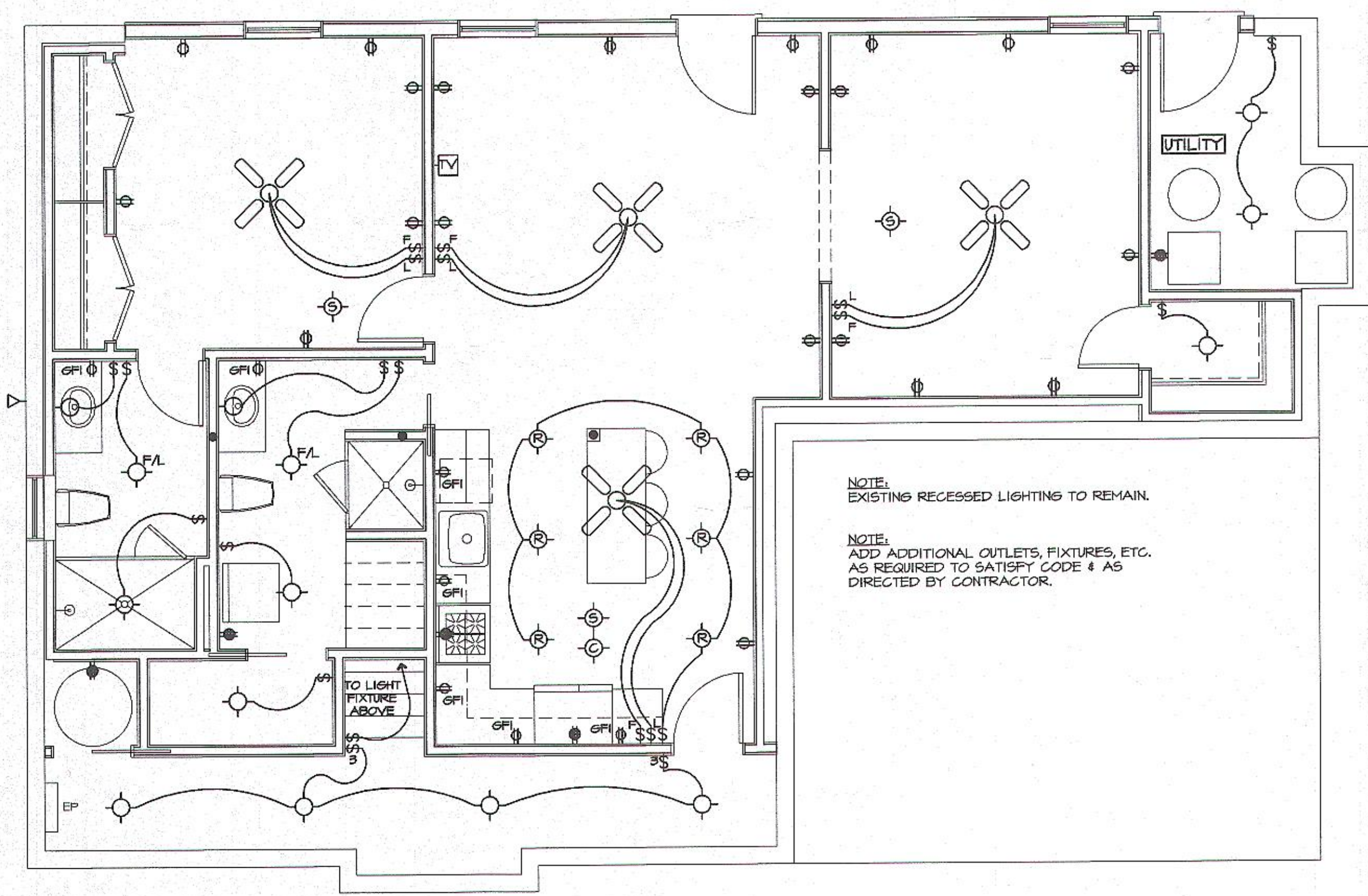
SQUARE FOOTAGE:
BASEMENT PLAN 848 S.F.
SQUARE FOOTAGE CALCULATIONS ARE MADE FROM OUTSIDE OF EXTERIOR FRAME WALLS EXCLUDING DECKS, PORCHES, ATTICS & FIREPLACES. TWO STORY SPACES AND STAIRS ARE COUNTED ONCE.



1 BASEMENT PLAN
A-1 SCALE: 1/4" = 1'-0"

ELECTRICAL SYMBOLS LEGEND

\$	- SINGLE POLE SWITCH	⊕	- CEILING MOUNTED WATERPROOF RECESSED INCANDESCENT FIXTURE
\$3	- 3 WAY SWITCH	⊕	- CEILING MOUNTED JUNCTION BOX
\$4	- 4 WAY SWITCH	⊕	- CEILING MOUNTED DUCTED EXHAUST FAN W/ LIGHT FIXTURE
\$D	- DIMMER SWITCH	⊕	- CEILING MOUNTED RECESSED WALL WASH INCANDESCENT LIGHT FIXTURE
\$T	- TIMER SWITCH W/ MANUAL OVERRIDE	⊕	- CEILING MOUNTED PORCELAIN INCANDESCENT LIGHT FIXTURE
⊕	- DUPLEX OUTLET	⊕	- SMOKE DETECTOR- CEILING MOUNTED
⊕	- OUTLET DEDICATED TO APPLIANCE	⊕	- CARBON MONOXIDE DETECTOR CEILING MOUNTED
⊕	- EXTERIOR OUTLET IN WATERPROOF BOX W/ LID	⊕	- DOOR BELL CHIME
⊕	- DIRECT HARD WIRE CONNECTION	⊕	- DOOR BELL PUSHBUTTON
▲	- TELEPHONE JACK	⊕	- SURFACE MOUNTED FLOOD LIGHT W/ MOTION DETECTOR
▲	- CATEGORY 5 JACK	⊕	- SURROUND SOUND SPEAKER
⊕	- CABLE OUTLET	⊕	- FROST FREE HOSE BIB
⊕	- WALL MOUNTED SURFACE INCANDESCENT LIGHT FIXTURE	⊕	- DUPLEX FLOOR OUTLET
⊕	- EXTERIOR WALL MOUNTED SURFACE INCANDESCENT LIGHT FIXTURE W/ WEATHERPROOF COVER AS SELECTED BY OWNER	⊕	- DECORATIVE CEILING MOUNTED FAN AS SELECTED BY OWNER
⊕	- CEILING MOUNTED SURFACE INCANDESCENT LIGHT FIXTURE SELECTED BY OWNER	⊕	- SPLIT WIRE DUPLEX OUTLET
⊕	- CEILING MOUNTED RECESSED INCANDESCENT LIGHT FIXTURE		



2 BASEMENT ELECTRICAL PLAN
A-1 SCALE: 1/4" = 1'-0"

Revisions:

Project No. KAZ - 2601
Date: 2/22/26
Drawn By: TMH
Reviewed By: KLM

Sheet Number:
A-1